



Districts, State, All State- Critics Choice.
Celebration of performance!

"While visible work of the Association is carried on through a series of contests, the fundamental philosophy of the Association has a much deeper basis. The philosophy is built upon the belief that no form of activity is any more important than that of learning to speak effectively. All true Americans believe in educational enlightenment, but the effectiveness of each enlightenment may be lost through the inability of our people to express to others their ideas and beliefs"

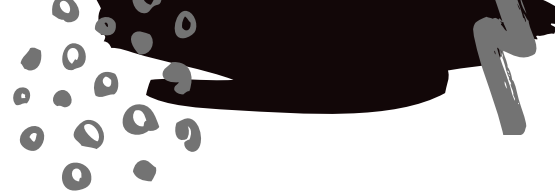
IHSSA AND NSDA



- Foster communication, collaboration, critical thinking, creativity
- Allows students to advocate and show their words matter
- Gives students a platform to perform
- Multiple categories
- Celebrates students and coaches
- Connects and supports students
- Empowers students
- Grow leadership skills
- HAVE FUN with an amazing group of students who have respect for each others performances and celebrate performances

"Speech and debate changes lives. NSDA membership builds confidence, boosts classroom performance, improves communication, and increases critical thinking skills to prepare students for college. Our activity provides life skills vital to a young person's success in the future."

- NSDA- Honor Society recognition, Honor Degrees- points earned through competition or service- Individual tournament awards, year-long growth, Service Awards, Academic All American



INTERESTED IN NSDA?

CONTACT US

West Iowa Board Members

- Jeremy Fitzpatrick- Johnston- Chair
- Marissa Kuiken- Sioux City East
- Kirk Kelloway- CAM HS
- Loan Nguyen- Des Moines Roosevelt
- Troy Greiner- Okoboji Community School

East Iowa Board Members

- Maggie Rietz- West HS Davenport- Chair
- Donal May- Clark Community HS
- Joe Rankin- Bettendorf
- John Cooper- West HS Iowa City
- Cyndy Woodhouse- John F Kennedy HS

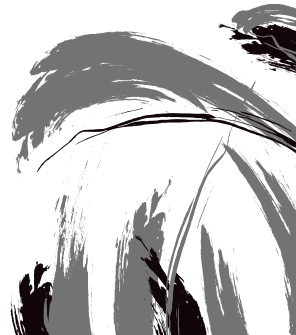
National Speech and Debate Association
401 Railroad Place WDSM, IA
920-748-6206
info@speechanddebate.org

SPEECHANDDEBATE.ORG



IHSSA & NSDA

- DIFFERENCES AND SIMILIARITIES
- CONTACT INFORMATION



IHSSA IE CATEGORIES

1. Prose- 6 minutes. Not memorized, familiarity with the script. May use original material written by themselves.
2. Poetry- 6 minutes. Not memorized but familiar. Need manuscript. May use original material written by themselves.
3. Expository- 6 minutes. CAN use visual aids. can use projector. Can be persuasive or entertaining but must be informative. 50 word notecard allowed.
4. Original Oratory- 8 minutes. Written BY contestants. Need a copy. Notes can be used but not solely relied on. Quotes are discouraged, no more than 150 words. May use lectern. Persuasive or inspiration > informational.
5. Spontaneous Speaking- 5 minutes. 3 minute prep. speech well developed with clear organization and supporting material
6. Acting- 8 minutes. Single Chair (if wanted). May be original or monologue, humorous or serious. No blocking.
7. Lit Program- 8 minutes. Not memorized. Familiarity with script. At least ONE prose and at least ONE poetry on a common theme. Arrange the selections to develop a theme which is stated in the early part of the program. Movement- interpretive category, not an acting category.

NSDA CATEGORIES

1. Prose- 5 min (30 sec grace)-expresses thought through language recorded in sentences and paragraphs: fiction, and non fiction. **ONLY PUBLISHED PRINTED WORKS MAY BE USED** unless work meets interp rules for pdf, e-books, and online material. Must have a manuscript.
2. Poetry- 5 min (3 sec grace)- - ideas, experience, or emotion through creative arrangement of words according to their meaning. Must have a manuscript. Publishing rules apply like Prose. Binder tech is okay.
3. Informative-10 min (30 sec grace). Topic of their choosing educating audience. Goal is to educate, not advocate. Craft speech using evidence, logic, and optional Visual aids- **NOT ELECTRONIC!**
4. Original Oratory- 10 min (30 sec grace)- Self-written speech. General purpose is to persuade. Inform and entertain is secondary. No visual aids are permitted. No more than 150 words may be direct quote, must be stated.
5. Spontaneous Speaking- many Iowa tournaments will offer this category similar to IHSSA. At NSDA Nationals, it is called Impromptu and it is a 7 minute category where students divide the time how they see fit and no notes are used. Organization, structure, delivery, analysis are judging criteria.
6. Dramatic Interpretation- 10 min (30 sec grace). Play, short story, published work, character development depth. 1 or more character. No prop. No chair. Introduction written by student. Blocking encouraged.
7. Program of Oral Interpretation- 10 min (30 sec grace)- Thematically linked selections 2 or 3 genres: prose, poetry, drama. Devote approximate equal times to each of the genres. Binder tech and vocal variation encouraged. Must meet publishing requirements.

WHY DO BOTH?

START EARLY

Many Speech and Debate Tournaments start as early as September. This eliminates the "scramble" to find pieces when they have been competing with the pieces for months with few alterations. You can also get students interested in IE early in the year which may lead to students trying new categories and getting others interested to build a large IE team!!!

EASY TRANSITION

Many of these categories are so closely linked that they are easy to just do a little format changing, tech work, blocking changes, addition or subtraction to the piece.

RARELY CONFLICT

In Iowa, there is rarely a conflicting tournament with IHSSA. Tournaments can be found on Tabroom.com- some virtual, some in person.

Recruitment help ideas?

[https://www.speechanddebate.org/
team-recruitment-strategies/](https://www.speechanddebate.org/team-recruitment-strategies/)