



# SWIFT

## December 2025

**SPEECH WORKERS OF IOWA FEATURE THEMSELVES**

# IHSSA + YOU HELLO! HELLO!

- DEBATE COMMITTEE
- ONLINE REGISTRATION
- DEBATE UPDATES
- STAGE WEAPONS POLICY
- COACH CONTACTS
- CONTEST DEADLINES
- VIDEO SUPPORT
- COMMENT SHEETS
- IHSSA CALLBOARD

"The philosophy of the IHSSA is built upon the belief that no form of activity is any more important than that of learning to communicate effectively."

stacy@ihssa.org  
515.401.1834

5000 Westown Parkway, Suite 150  
West Des Moines, IA 50266

pam@ihssa.org  
515.288.9741



# A Lil' Aorn Chestnut



STACY: Dad, tell me about your favorite toy you ever received.

DAD: Well, let me think about that. *(PAUSE)* It was a toy farm set. I suppose at that time I was probably six or seven. And it consisted of a barn that you had to put together. It was all tin and it had a hayloft in it. And when you got the barn put together there was even more! There were these fake plastic fences that came with it. And there were farm animals that came with it too. Cows and hogs and chickens and horses. There were even these little plastic bales of hay you could put up in the hayloft. And a tractor and a wagon came with it, too. There were also trees that were included. It was a complete, whole farm set from top to bottom. I would get it all set up and just play farm for hours. I always added to the pieces somehow and improvised what was going on in the farm. You can still get these kinds of toy sets but the ones nowadays do not measure up to what I had. Quite frankly, I sure wish I had that farm set today!

STACY: Mom, what was your favorite toy you ever received?

MOM: I was six years old or seven. My mom asked me what color of dress I wanted her to make for me and I said red. And it was getting very close to the Christmas Eve church program. The day before the program, the dress was all still laying on the table in pieces. Not put together all at. When I got up the next morning, it was almost done except it had not been hemmed and the puffed sleeves were still laying on the table. When I went to school that day, I was so sad because I knew I wouldn't be able to wear the dress for the Christmas program. But when I came home from school, there it was! Hanging up on a hanger, all hemmed and pressed and ready to go with the sleeves sewn on! My new red taffeta, two-tiered skirt with tiny buttons all down the back! When I got to church that night to line up in the basement for the program, I took my coat off as fast as I could so everyone could see my new red dress my mom had made. And when I was singing the songs up in front of the congregation, I pushed everyone a little bit to the side. I just wanted everyone to see my red dress!

**Happy Everything to YOU and YOURS! May your holiday season be filled with forever memories of joy!**

Stacy Hansen, IHSSA Executive Director





# IHSSA DEBATE COMMITTEE



The IHSSA DEBATE COMMITTEE works passionately throughout the year bringing speech and debate insight and expertise to the IHSSA Family. They assist with the the IHSSA State Tournament held each year on the DMACC Campus in Ankeny. Too, they are instrumental in creating connections with the National Speech and Debate Association (NSDA) as well as the Iowa Forensics League (IFL). The IHSSA is most grateful for their leadership and their always inclusive approach to debate and speech activities.

## SPENCER WAUGH

Simpson College

Spencer is the Special Assistant to the Executive Director for Debate. Spencer started Simpson's Debate in 2011 and generously offers his passion and direction for all things speech and debate to the IHSSA.



## JEREMY FITZPATRICK

Johnston

I enjoy being a part of the IHSSA Debate committee because it gives me a chance to work with other debate coaches to promote the activity.



## LYDIA COWINS

Des Moines Christian

I like being a part of the IHSSA debate community because it gives me a chance to give back to an activity that has given me so much. I also get to learn from people with great and diverse experience.



## ANNE DEAM

Ames

Annie Deam has coached debate (Public Forum, Congress, and some speech events) since 2011 at Ames High School, where she also teaches French, German, and Spanish.



## SAM JUHL

Des Moines East

Sam enjoys many weekends with his debate students. Sam is passionate about helping his students succeed and is always happy to help others!



# STATE DEBATE INFO

**State Debate Tournament: January 9/10, 2026: DMACC, Ankeny**

**DIRECTIONS:** DMACC CAMPUS/Ankeny. Exit I-35/Exit 90. Head west on Oralabor Road. Park in the NORTH lot. The STUDENT CENTER will serve as the headquarters for contest.

**DEBATE AREAS:** All four areas (Congress, Lincoln Douglas, Policy, Public Forum)

**DEADLINES:** December 19: IHSSA Eligibility / Fee form  
December 19: Entry / Judge form

Please remember we will debate the JANUARY topic for both Public Forum and Lincoln Douglas. [HERE ARE THE TOPICS for STATE DEBATE.](#)

Registration materials for the State Tournament are online at TABROOM. That link for registration is: [TABROOM.COM](https://www.tabroom.com). Please see this [TABROOM](#) site for all the information on location and registration for the State Debate Tournament.

If you have not been to the tournament before and wish to be part of the IHSSA State Tournament just call the State Office and we can make that happen!

Coach check-in begins at 10:30 in the Student Center Friday, January 9. Student Congress registration will be from 11:30-12:30 p.m. in the Student Center on Friday, January 9. Debating in Public Forum, L-D, and Policy will begin at 12:30 p.m. on Friday and 4 rounds will be debated that afternoon and night. Student Congress will begin with a General Meeting at 12:30 p.m. All Saturday events will begin at 8:00 a.m.

Here is the [DEBATE SCHEDULE.](#)

Here is the [DEBATE TABROOM.](#)

# IHSSA+DEBATE





# **COPYRIGHT GUIDANCE**

## **Permission to do Material or Music in all IHSSA Events**

Please remember you must have permission to do ANY MATERIAL that you use for contest events. We have agreements with many companies to use their materials for IHSSA contest. For example, if you use recorded music for background in Mime or One Act (unless it is BMI music or you have purchased the BMI license) you must have permission to use it. If you are using music for Short Film or TV you must get rights from the copyright holder and get synchronization rights for that song or songs. If you are reading an interp selection from a book you must receive permission to read that selection or cutting at the contest. In Musical Theatre you cannot do cuttings unless you have permission to do so. You can NEVER cut or rearrange material without receiving permission or using material from the companies we have agreements with. Receiving permission to perform at contest is just that. It does not cover performing for other events. Also, NEVER allow contest selections to be placed on YouTube or the internet. YOU DO NOT HAVE PERMISSION TO DO THAT! It is the responsibility of the local school to secure all performance rights for contest selections. Be sure you have permission to do material before you start a selection for contest. The IHSSA will NOT support any school that does not secure performance rights for selections at contest. Do not put your school district in financial danger by not finding the rights to perform material. Please remember all of your titles are posted on the web and those groups will see what you are doing. Get the proper rights to do material for contest. You as a coach/school must do this! Secure permission.

**GREAT  
IDEA!**

**FROM FEAR TO FAIR USE**  
**COPYRIGHT SUPPORT MATERIALS**





## LARGE GROUP MUSICAL THEATRE APPLICATION & PERUSAL FORM

Name of Organization \_\_\_\_\_ Account Number \_\_\_\_\_

Address \_\_\_\_\_

City, State, Zip \_\_\_\_\_

Phone \_\_\_\_\_ Fax \_\_\_\_\_

Dear Licensing Agent:

\_\_\_\_\_ located in \_\_\_\_\_, will perform in the Large Group category as part of the ☐ DISTRICT ☐ STATE Competition to be held from \_\_\_\_\_ to \_\_\_\_\_ in \_\_\_\_\_ We are asking for written permission from you to use material represented by your company in the performance.

The selection our group would like to perform is ☐ a song ☐ a scene ☐ both

(Name of song and/or scene #)  
from \_\_\_\_\_ by \_\_\_\_\_ (Author(s))

By signing below, I agree to terms and rules of MTI as listed on the attached page.

Signature \_\_\_\_\_ PRINT Name \_\_\_\_\_  
Title \_\_\_\_\_ Date \_\_\_\_\_

☐ Our group will need materials to perform the music and/or scene. Enclosed is \$75.00 for materials.

If music is needed please check or money order payable to Music Theatre International or fill out the enclosed Credit Card information. PURCHASE ORDERS ARE NOT ACCEPTED.

AMOUNT TO BE CHARGED: \$75.00 ☐ VISA ☐ MASTERCARD ☐ AMEX

CARD NUMBER: \_\_\_\_\_ EXPIRATION DATE: \_\_\_\_\_

NAME (AS IT APPEARS ON CARD): \_\_\_\_\_

BILLING ADDRESS OF CREDIT CARD: \_\_\_\_\_

City, State, Zip: \_\_\_\_\_

I AGREE TO PAY THE ABOVE LISTED AMOUNT

Signature of Card Holder and Date: \_\_\_\_\_

APPLICABLE DEPOSIT REFUND WILL BE PAID ONLY BY CHECK  
PLEASE MAKE MY REFUND CHECK PAYABLE TO: ☐ ORGANIZATION ☐ INDIVIDUAL NAMED ON CARD

A countersigned copy of this document will serve as Music Theatre International's permission for the above named organization to perform the selection listed above at the district and state level for one school calendar year from the date below.

Music Theatre International Representative \_\_\_\_\_ Title \_\_\_\_\_ Date \_\_\_\_\_

CLICK HERE for  
[MTI FORM LINK](#)

**TRW**



## LARGE GROUP MUSICAL THEATRE APPLICATION

Organization Name \_\_\_\_\_ Account Number (if known) \_\_\_\_\_

Address \_\_\_\_\_

City, State, Zip/Postal \_\_\_\_\_

Phone \_\_\_\_\_ EMAIL - print legibly please! \_\_\_\_\_

Dear Licensing Agent:

\_\_\_\_\_ located in \_\_\_\_\_, will perform in the Large Group category of the IHSSA competition to be held from \_\_\_\_\_ to \_\_\_\_\_ We request written

permission from TRW to use the intellectual property created below in our performance. The performance selection is: ☐ a song ☐ a scene ☐ both

(Name of song and/or scene #)  
from \_\_\_\_\_ by \_\_\_\_\_ (Author(s))

By signing below, I agree to the TRW terms and rules as described on the attached page/IHSSA website.

Signature \_\_\_\_\_ PRINT Name \_\_\_\_\_  
Title/Position \_\_\_\_\_ Date \_\_\_\_\_

☐ Our group will need materials to perform the music and/or scene. Enclosed is \$25.00 for digital materials. To receive materials digitally, I have included my email address printed legibly above (next to phone number). Please enclose check, money order, or PO issued to Theatrical Rights Worldwide or complete the Credit Card information below.

AMOUNT TO BE CHARGED: \$25.00 ☐ VISA ☐ MASTERCARD ☐ AMEX

Card Number \_\_\_\_\_ Expiration Date (MM/YY) \_\_\_\_\_ Card Security Code \_\_\_\_\_

Name (as it appears on card) PLEASE PRINT LEGIBLY \_\_\_\_\_

Billing Address \_\_\_\_\_

City, State, Zip/Postal \_\_\_\_\_

I AGREE TO PAY THE ABOVE LISTED AMOUNT

Signature \_\_\_\_\_  
A countersigned copy of this document will serve as THEATRICAL RIGHTS WORLDWIDE's permission for the above named organization to perform the selection listed above at the district and state level for one school calendar year from the date below.

Theatrical Rights Worldwide Representative \_\_\_\_\_ Title/Position \_\_\_\_\_ Date \_\_\_\_\_

CLICK HERE for  
[TRW FORM LINK](#)

Additional info on MTI and TRW is on the IHSSA web site. There are other groups that you can use for materials for musical theatre, too. Please see the note from the NFHS in this SWIFT. The Iowa rep for MTI is Roseanne George: RoseanneG@MTIShows.com. Scan your requests to her. BE SURE you are doing the RIGHT thing with copyright and permissions. Do RIGHT! DO WRITE!





# NOTES

**Need COMMENT SHEETS? Print copies of these now. Use them in your rehearsals. Do not wait until the last moment to print these. Click HERE.**



**CHAIRS for Musical Theatre/Ensemble/MIME = REGULAR CHAIRS (no lawn chairs, overstuffed livingroom chairs, or chairs with wheels, etc. The rule to bring your own chairs is made for SAFETY purposes vs. decorative. Use sturdy chairs.**

## **IHSSA ELIGIBILITY**

**By directive of the Executive Board, please remember all students in all events must be academically eligible. This includes students in Short Film, Radio, and TV. All students must be eligible when the short film is given at contest. If a student was ineligible when it was filmed and is not eligible on the date of the contest, that film cannot be shown at contest. YOU CANNOT USE AN INELIGIBLE CONTESTANT IN IHSSA ACTIVITIES. If you need more clarification call the State Office. HERE IS THE ELIGIBILITY POLICY.**

**IHSSA COMMITTEE APPOINTMENTS FOR 2025-2026  
Coaches Convention: Marissa Kuiken, Waukee Northwest**



# IHSSA REGISTRATION



## 1 PAY YOUR MEMBERSHIP

Have you paid your 25-26 Membership Dues? The PO is not payment. You must submit a check to the IHSSA. You must work with your business office to mail a check to the IHSSA. \$100 High School/\$50 9th Grade (\$25 late fee.)

## 2 OBTAIN LOGIN/PASSWORD

The usernames/passwords for on-line forms are the same as last year. If you need a refresh, email the State Office. Keep it handy; you'll be using it several times. [stacy@ihssa.org](mailto:stacy@ihssa.org)

## 3 CHECK YOUR SITE LOCATION

By December 15, DISTRICT Large Group sites will be posted on the IHSSA website. Do not register before sites are posted. You are not able to register until sites are posted.

## 4 EMAIL YOUR CONTEST MANAGER

After you find out your DISTRICT site location, EMAIL your contest manager your contact information. You must email your contest manager: [HERE ARE CONTEST MANAGERS' CONTACTS](#).

## 5 SUBMIT ONLINE REGISTRATION DUE: Jan. 7

Complete the ONLINE REGISTRATION at the IHSSA website for DISTRICT REGISTRATION. Print 3 copies. (1) for payment to submit to the IHSSA (2) 1 to send to District Contest Manager (3) and a copy for your records. You need the log in/password for this. The form is the invoice for your contest entry fees.

JANUARY

7

## 6 SUBMIT IMMEDIATE PAYMENT \$ TO IHSSA

Work with your business office and secure payment to the IHSSA. Remember, a PO is not payment. Too, please remember the deadline of registration. Late entry penalized will be enforced per constitutional rules. Late entries will perform at the end of the day. Please do your part and get the form to your business office for payment.

## 7 CALL STACY 4 SPECIAL REQUESTS DUE: Jan. 8

All special requests for performances must be called to Stacy Hansen. Contest Managers will not accept special requests. Special requests are for school related events only. No email requests will be considered. No phone messages will be considered.

JANUARY

8

## GOT ??'s?



[USE THIS additional step-by-step handout](#) for additional support.

[WATCH THIS VIDEO](#) for additional support.



Thank you CARRIE TINKHAM, Coach at Large, for providing helpful guide and video! .

# IHSSA CONTEST ENTRY DEADLINES



**STATE DEBATE**  
**December 19, 2025**  
**All entries due at**  
**TABROOM**

**DISTRICT LARGE GROUP**  
**January 7, 2026**

**STATE LARGE GROUP**  
**Immediately after District**

**LG ALL STATE**  
**Immediately after notification**



**DISTRICT IE**  
**February 11, 2026**

**STATE IE**  
**Immediately after District**

**ALG ALL STATE**  
**Immediately after notification**

**EARLY is ON TIME.**  
**ON TIME is LATE.**  
**LATE is....OH NO!**



**Send in payment early. The PO**  
**is NOT payment. Communicate**  
**EARLY with your bookkeeper.**

**Please remember these deadline dates. Late entry penalties will be enforced per the IHSSA Constitution. All late entries will be placed at the end of the performance day, as per the Executive Committee. EARLY is ON TIME.**

## SPECIAL REQUESTS

**By direction of the Executive Committee, all special requests must be CALLED INTO THE STATE OFFICE by the dates listed below:**

**District LG: January 8, 2026**

**State LG: January 28, 2026**

**District IE: February 12, 2026**

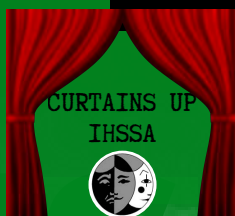
**State IE: March 4, 2026**



**Special requests after these deadlines will only be accepted on an emergency basis. Email requests or phone messages will NOT be honored. COACHES must speak directly to Stacy Hansen, IHSSA Executive Director. Contest Managers will not accept special requests. SAT testing is NOT a special request. Thanks for your compliance.**

**SUBSCRIBE TO OUR YOUTUBE CHANNEL: IHSSA + YOU!**

**You**  
**Tube**



**LOOK for CURTAINS UP! A weekly video message about all things IHSSA on our YOUTUBE channel.**





## WHERE do I go for contest?

**LG DISTRICT SITE ASSIGNMENTS:** can be found at CONTESTS/LG  
**IE DISTRICT SITE ASSIGNMENTS:** will be released in JANUARY.

## WHEN do I register for contest?



Register **AFTER** Contest Sites are posted. **District LG Registration is now open.** **IE Registration will open in January.**



## WHERE will I register for contest?

You will register online at [ihssa.org](http://ihssa.org) using your secure login/password. Contact the IHSSA Office if you need login info.



# Contest Sites 26

### NORTHWEST

#### LARGE GROUP DISTRICT

Manson NW Webster  
Spencer  
Storm Lake

#### LARGE GROUP STATE

Cherokee Washington

#### INDIVIDUAL EVENTS DISTRICT

Kuemper Catholic  
Newell-Fonda  
Sioux City North

#### INDIVIDUAL STATE CONTEST

Denison

### NORTHEAST

#### LARGE GROUP DISTRICT

Cedar Falls  
Dubuque Senior  
Mason City

#### LARGE GROUP STATE

Waterloo West

#### INDIVIDUAL EVENTS DISTRICT

Decorah  
Forest City  
Postville

#### INDIVIDUAL STATE CONTEST

Maquoketa Valley

### SOUTHWEST

#### LARGE GROUP DISTRICT

Creston  
Des Moines Hoover  
Lewis Central  
Mount Ayr

#### LARGE GROUP STATE

West Des Moines Valley

#### INDIVIDUAL EVENTS DISTRICT

Atlantic  
Bondurant-Farrar  
East Union  
Johnston

#### INDIVIDUAL STATE CONTEST

Council Bluffs Thomas Jefferson

### SOUTHEAST

#### LARGE GROUP DISTRICT

Centerville  
Monticello  
Pella  
Wapello

#### LARGE GROUP STATE

Clear Creek Amana

#### INDIVIDUAL EVENTS DISTRICT

Fairfield  
Lisbon  
Montezuma  
PCM

#### INDIVIDUAL STATE CONTEST

Vinton-Shellsburg

**STATE DEBATE:**  
**ANKENY DMACC CAMPUS**

**LG.GROUP ALL STATE FESTIVAL:**  
**IOWA STATE**

**IE All STATE FESTIVAL:**  
**UNI**



January 7: LG Districts Registration DUE

January 8: LG Districts Special Requests

DUE to Stacy by phone requests only

January 27: LG State Registration DUE

January 28: LG State Special Requests DUE

to Stacy by phone requests only

February 10: ALL STATE Registration DUE

## ● LG GROUP DUE DATES



IE

## DUE DATES



February 11: IE Districts Registration DUE

February 12: IE Districts Special Requests

DUE to Stacy by phone requests only

March 3: IE State Registration DUE

March 4: IE State Special Requests DUE to

Stacy by phone requests only

March 17: IE ALL STATE Registration DUE







# IHSSA POLICIES

## WEAPONS POLICY

IT IS UP TO EACH LOCAL SCHOOL DISTRICT TO DETERMINE THEIR WEAPONS POLICY FOR PROPS AT IHSSA CONTESTS. THE IHSSA'S LEGAL COUNSEL CONFERS THAT IT WILL BE THE DUTY OF AN INDIVIDUAL SCHOOL TO WRITE THEIR PARTICULAR CONTEST SITE MANAGER IF THEY HAVE A LOOK-ALIKE WEAPON IN THEIR CONTEST SELECTION. THEN THE LOCAL CONTEST SITE WILL MAKE THE DECISION IF THEY WILL ALLOW THE LOOK-ALIKE ON STAGE OR IN THE CLASSROOM ACCORDING TO THEIR OWN DISTRICT RULES. AN EXAMPLE WOULD BE: SCHOOL B IS DOING A CHORAL READING INVOLVING THE OLD WEST. THEY WILL BE WEARING TOY PLASTIC PISTOLS FOR EACH INDIVIDUAL IN THE CHORAL READING. SCHOOL B MUST THEN WRITE THEIR LOCAL CONTEST SITE MANAGER AND ASK PERMISSION TO USE THIS LOOK-ALIKE PROP WEAPON AT THAT SITE. THE CONTEST SITE MANAGER WILL THEN INFORM SCHOOL B THAT IT WILL BE 1) ALLOWED WITH NO SPECIFICATIONS, 2) ALLOWED WITH SPECIFICATIONS, OR 3) WILL NOT BE ALLOWED. BEGINNING IN THE 1996 CONTEST SEASON, EACH DISTRICT IN THE STATE WAS ENCOURAGED TO DEVELOP THEIR OWN LOCAL WEAPONS POLICY. IF YOU HAVE QUESTIONS ON THIS PLEASE CALL THE STATE OFFICE.

## TOBACCO/ALCOHOL POLICY

NO REAL TOBACCO, VAPOR PRODUCTS OR ALCOHOL WILL EVER BE USED IN IHSSA CONTEST ENTRIES. THIS INCLUDES LIVE PRODUCTIONS AT CONTEST AS WELL AS SHORT FILM/TV NEWSCASTING PRODUCTIONS THAT ARE FILMED OFFSITE. LOOK ALIKE ALCOHOL, VAPOR PRODUCTS, OR TOBACCO THAT ARE NECESSARY FOR IHSSA PRODUCTIONS AT CONTEST OR IN FILMED EVENTS SHOULD BE PROVIDED BY THE PARTICIPATING SCHOOL AND SECURED BY THE IHSSA COACH. ALL SUCH "LOOK ALIKES" WILL BE FACSIMILES OR NON-FUNCTIONING PROPS. THE IHSSA COACH IS RESPONSIBLE FOR STORING THE PROP "LOOK ALIKE" IN A LOCKED ROOM OR SECURE, CONCEALED STORAGE AREA. STUDENTS WILL CHECK OUT THESE PROPS WHEN NEEDED AND WILL BE SUPERVISED AT ALL TIMES. REAL ALCOHOL, VAPOR PRODUCTS OR TOBACCO SHOULD NEVER BE USED IN AN IHSSA PRODUCTION. USE OF REAL PRODUCTS IS A VIOLATION OF STATE LAW FOR THE STUDENT(S) AND THE SCHOOL.

STUDENTS SHOULD NOT BE ASKED TO BRING A 'LOOK ALIKE' ALCOHOL, VAPOR PRODUCT, OR TOBACCO PROP TO SCHOOL OR AN IHSSA CONTEST. ALL PROPS (EMPTY CANS, BOTTLES, FAKE TOBACCO PRODUCTS, VAPOR PRODUCTS) SHOULD BE PROVIDED BY THE PARTICIPATING SCHOOL AND SECURED BY THE IHSSA COACH. THE PROP SHOULD BE WRAPPED WHENEVER IT IS MOVED FROM ONE AREA OF THE SCHOOL/CONTEST SITE TO ANOTHER. THIS MOVING SHOULD BE DONE ONLY BY THE TEACHER/COACH. STUDENTS SHOULD NEVER CARRY THESE PROPS THROUGH THE HALLS OF A SCHOOL/CONTEST SITE. IF THE LOOK ALIKE PROP IS USED IN A REHEARSAL, AT A FILMING, OR AT CONTEST ALL ADMINISTRATORS OF PARTICIPATING SCHOOLS SHOULD BE NOTIFIED OF THE USE OF THAT ITEM.

ALL CONTEST MANAGERS SHOULD BE ALERTED IF A "LOOK ALIKE" TOBACCO, VAPOR PRODUCT, OR ALCOHOL PROP IS BEING USED IN THE IHSSA CONTEST SERIES.

# WEAPONS POLICY EXAMPLE

**SAFETY  
FIRST**

THE FOLLOWING IS AN EXAMPLE OF A WEAPONS PROCEDURE DEVELOPED BY HOF COACH DENIS HILDRETH/HOOVER, DES MOINES DURING HIS TENURE.

NO REAL WEAPONS WILL EVER BE USED IN DRAMA/SPEECH CLASS OR ON STAGE. PLAY WEAPONS THAT ARE NECESSARY FOR DRAMA/SPEECH PROJECTS OR FOR PLAY PRODUCTION SHOULD BE PROVIDED BY THE SCHOOL AND SECURED IN THE DRAMA/SPEECH ROOM. ALL SUCH "WEAPONS" WILL BE FACSIMILIES (TOYS) OR NON-FUNCTIONING PROP WEAPONS. THE SCHOOL DRAMA/SPEECH PERSONNEL ARE RESPONSIBLE FOR STORING THE PROP WEAPONS IN A LOCKED ROOM OR SECURE, CONCEALED STORAGE AREA. STUDENTS WILL CHECK OUT THESE PROPS WHEN NEEDED AND WILL BE SUPERVISED AT ALL TIMES. DRAMA/SPEECH STUDENTS SHOULD BE EDUCATED ON THE PROPER HANDLING AND SAFETY TECHNIQUES OF ALL "WEAPONS" USE.

STUDENTS SHOULD NOT BE ASKED TO BRING A WEAPON-LIKE PROP TO SCHOOL. ALL DRAMA/SPEECH WEAPON-LIKE PROPS (A BLACK PLASTIC REVOLVER, AN ORANGE PISTOL, A RUBBER KNIFE, PLASTIC SWORDS) SHOULD BE PROVIDED BY THE SCHOOL AND SECURED IN THE DRAMA/SPEECH ROOM OR DRAMA PROP ROOM.

THE PROP SHOULD BE WRAPPED WHENEVER IT IS MOVED FROM ONE AREA OF THE SCHOOL TO ANOTHER. THIS MOVING SHOULD BE DONE ONLY BY THE TEACHER. STUDENTS SHOULD NEVER CARRY THESE PROPS THROUGH THE HALLS.

STARTER PISTOLS SHOULD BE STORED IN THE SCHOOL VAULT.

STUDENTS SHOULD NOT BE ALLOWED TO CHECK THESE OUT. STARTER PISTOLS USED IN PRODUCTIONS SHOULD BE DONE WITH THE BUILDING PRINCIPAL'S KNOWLEDGE AND STRICT SAFETY GUIDELINES.

IF A WEAPON-LIKE PROP IS USED IN A REHEARSAL AND THE SOUND CAN BE HEARD, ALL ADMINISTRATORS IN THE BUILDING SHOULD BE NOTIFIED OF THE TIME THAT THE SOUND WILL IN THE REHEARSAL/PERFORMANCE.

## IHSSA CONSTITUTION



Educate yourself with the IHSSA Constitution. Educate your students. Each year, District Officers are called into centers to disqualify an entry based on a constitutional violation that could have been avoided by simply familiarizing oneself with the IHSSA rules. Make sure you and your students know, understand, and adhere to the rules. Be make sure your IHSSA Constitution and by-laws are the most up-to-date editions. [HERE are the 2023-2025 CHANGES LINK for LARGE GROUP EVENTS.](#)





# ADDRESS BOOK

Here are the  
CURRENT IHSSA Head LG, IE, Debate  
SPEECH DIRECTORS link.  
as of December 1, 2025.

To update any head contacts, please contact [pam@ihssa.org](mailto:pam@ihssa.org).  
(This document lists only the HEAD DIRECTORS.)

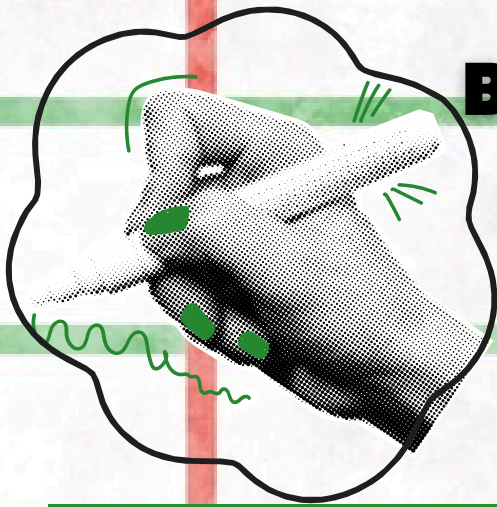
NEED CONTEST  
MANAGER INFO?  
Click here for  
CM CONTACTS.



## RISE VIDEO LINKS!







# Behind the Comment Sheet: IHSSA JUDGE SPOTLIGHT

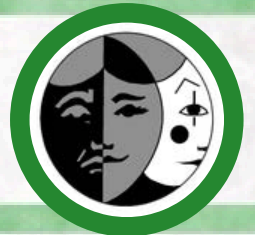
The IHSSA Judge Certification Committee meets throughout the year to assist in policies for certification procedures. They also aid in judge evaluations and plan workshops as well as clinics. The JC Committee would like to offer special recognition to these superior judges!

## AUDREY BELL

The IHSSA was a HUGE part of my high school career! I always loved theatre and acting, but the IHSSA gave me the confidence in my ability to truly find my passion! I had many speech judges who gave me the tools to further my craft as well as help my students, so when one of my friends invited me to get certified with him, it was an easy yes!

I want every student I see to know that I want the best for them! Every single student I see is incredible, regardless of where they are in their learning process, and I want every student to feel like they can take a deep breath and enjoy showing their true self to the judges and the audience!

I study music education and vocal performance at Wartburg College and love performing in an ensemble setting! I also enjoy getting out in nature and going on walks, hikes, or bike rides! I read as much as I can, and am currently rereading the Harry Potter series!



## MATTHEW CLENDINENG

I loved speech contest when I was in high school. A couple decades later I volunteered at a few speech contests and remembered how much I enjoyed the performances, so I decided to get certified as a judge. There is so much I learn as a writer, speaker, performer, and teacher from watching all of performances at speech contest.

At 4 PM on a contest Saturday, after I have turned in all the ballots and checked out with the contest manager, I sit in silence in my car and massage my cramping writing hand. In that moment the day's performances play through my mind and I get to relive countless displays of beauty, and bravery, and passion, and skill. I get to recall the eyes of performers as they fought through mistakes and nailed the lines they had practiced for months. I am filled with delight and inspiration thinking about all the effort put in by each of those students and I wish I could go back inside and do the whole day again. That moment is what I enjoy most about being an IHSSA judge.





# CALLBOARD

December 5/6: Hampton-Dumont-CAL Speech & Debate Rumble

January 7: IHSSA District Large Group Registrations DUE online

January 8: IHSSA District Large Group Special Requests

DUE to Stacy (Requests only taken by phone directly.

Do not leave a phone message. Talk directly to Stacy.)

January 9/10: IHSSA State Debate at DMACC

January 24: IHSSA Large Group District Contest

January 27: IHSSA State Large Group Registrations DUE online

January 28: IHSSA State Large Group Special Requests

DUE to Stacy (Requests only taken by phone directly.

Do not leave a phone message. Talk directly to Stacy.)

February 7: IHSSA State Large Group Contest

February 10: IHSSA Large Group All-State Festival

Registrations DUE

February 21: IHSSA Large Group All-State Festival

Want YOUR EVENTS published?

SUBMIT YOUR SPEECH/THEATRE/DEBATE DATES

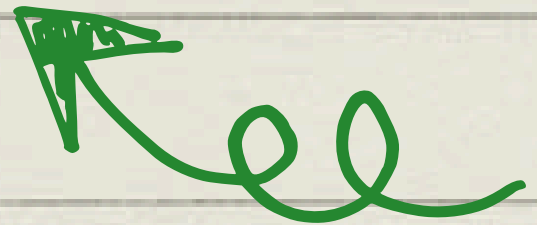
for our IHSSA Callboard at this LINK:

[IHSSA CALLBOARD DATES](#) (CLICK LINK)

# DECEMBER/JANUARY SUGGESTED COACH CALENDAR

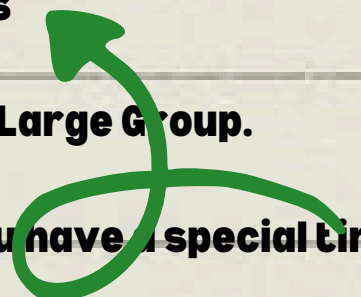
## I. DECEMBER

- A. Secure performance permissions.
- B. Hold Large Group auditions or sign-up.
- C. Hold IE auditions or sign-up.
- D. Establish Large Group rehearsal schedule.
- E. Contact LG contest manager via e-mail.
- F. Fill out Large Group/Debate entry forms (on-line) send by deadline. For Debate use web site listed on the IHSSA home page. Use password.
- G. Remember: SEND a copy of on-line registration form to District host.
- H. Send Registration FORM and PAYMENT \$\$\$ to IHSSA State Office.
- G. Decide on set pieces, costumes, etc.
- H. Check your constitution! CHECK the RULES!
- I. Encourage IE students to look for selections.
- J. Rehearse, rehearse, rehearse.
- K. Make transportation arrangements.
- L. Fill out and send in State Debate Forms.
- M. Contact Judges for State Debate Tournament.
- N. Secure Transportation/Health forms from students.



## II. JANUARY (District Large Group / State Debate)

- A. Check on transportation for district contest/State Debate.
- B. Rehearse, rehearse, rehearse.
- C. Check travel permission and health form documents for State Debate /District.
- D. Call State office by deadline if you have a special time request for Districts.
- E. Go to State Debate Tournament. Bring judges bond!
- F. Attend DISTRICT contest. BRING your COMMENT sheets
- G. Read critiques. Complete Judge Evaluations online.
- H. Encourage students and keep rehearsing for STATE Large Group.
- I. Work on IE entries.
- K. Send in STATE fees . Call State office by deadline if you have a special time request.
- L. Send a thank you note to DISTRICT contest manager.





# INTRODUCING

IHSSA



# VIDEOCASTING



THE NEW EXPERIMENTAL  
IE CATEGORY

[CLICK HERE FOR RULES](#)

[CLICK HERE FOR COMMENT SHEET](#)

[CLICK HERE FOR EXAMPLE 1](#)

[CLICK HERE FOR EXAMPLE 2](#)







QUITE



AWE  
SOME



VIDEO



GUIDES



Thank you IHSSA THINK TANK TEAM for your work on the IHSSA SUPPORT VIDEOS.

# IHSSA + YOU



## **IHSSA DATES FOR 2025-2026**

**AUGUST 16, 2025 - JUDGES / COACHES WORKSHOP, VIRTUAL**

**OCTOBER 10/11, 2025 - IHSSA COACHES CONVENTION  
GATEWAY HOTEL, AMES**

**JANUARY 9/10, 2026 - STATE DEBATE TOURNAMENT,  
DMACC, ANKENY**

**JANUARY 24, 2026 - DISTRICT LARGE GROUP CONTEST**

**FEBRUARY 7, 2026 - STATE LARGE GROUP CONTEST**

**FEBRUARY 21, 2026 - ALL-STATE FESTIVAL LARGE GROUP  
IOWA STATE CENTER, AMES**

**FEBRUARY 28, 2026 - DISTRICT INDIVIDUAL EVENTS**

**MARCH 14, 2026 - STATE INDIVIDUAL EVENTS**

**MARCH 30, 2026 - ALL-STATE FESTIVAL INDIVIDUAL EVENTS,  
UNI, CEDAR FALLS**

Get these dates to your students, parents, and administration so you  
can plan for these dates next year!

## **POST FOR ALL!**

